



TR 02



- Listen, point, and say.

Aa



Bb



Cc



Let's chant. 🎵

TR 03



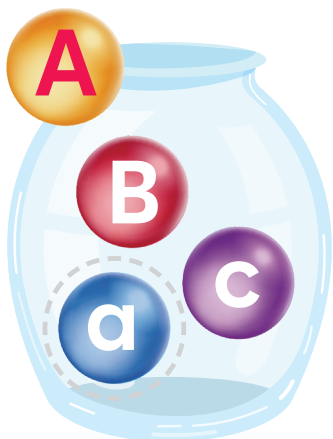
Letters & Sounds

TR 04

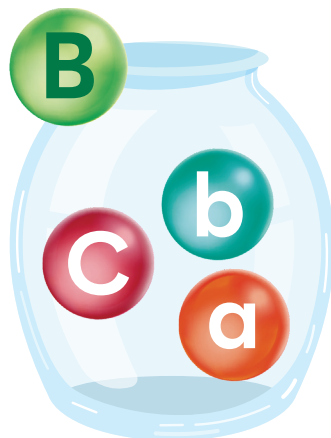


● Listen, say, and circle.

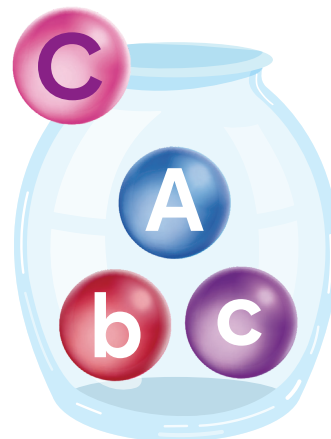
1



2



3

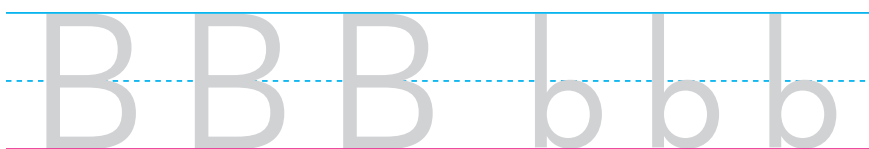
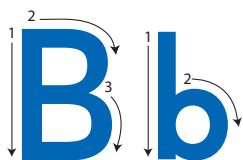


● Say and trace.

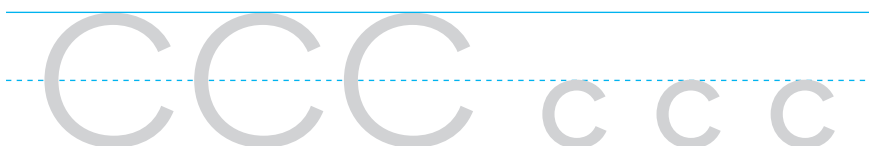
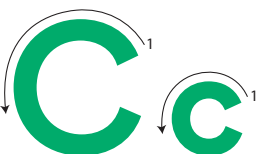
1



2



3



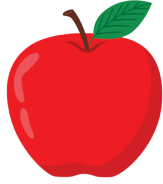
Words

TR 05



● Listen, point, and say.

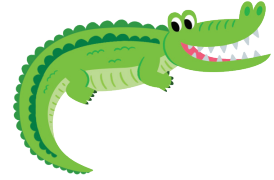
Aa



apple



ant



alligator

Bb



bear



ball



bus

Cc



cat



car



cow

Let's chant. 🎵

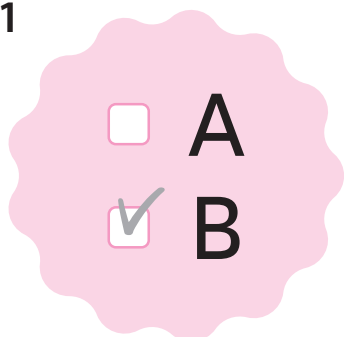
TR 06



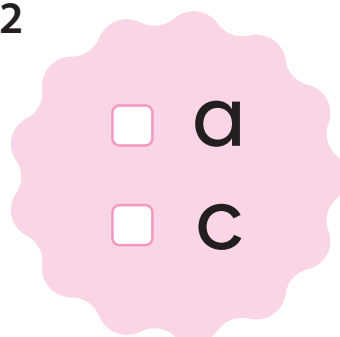
● Listen and check.



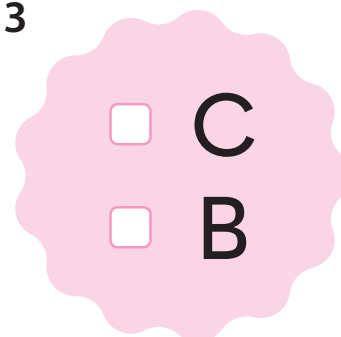
1



2



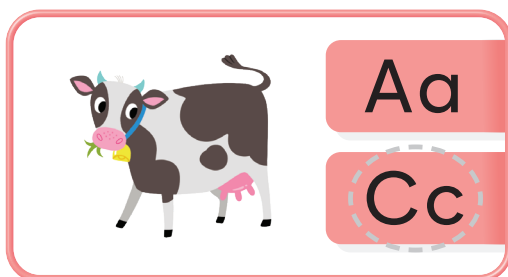
3



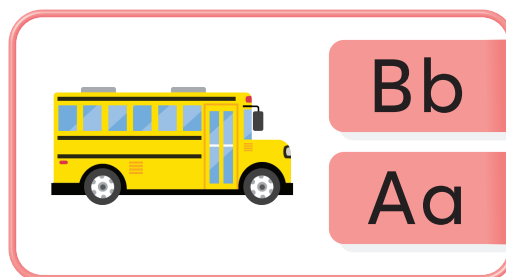
● Listen and circle.



1



2



3



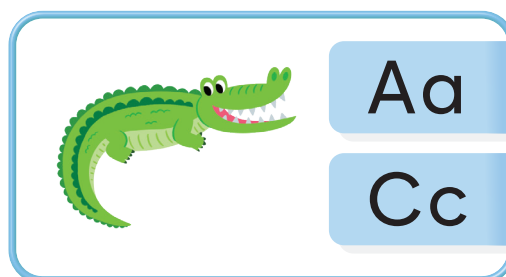
4



5



6



Practice

● Find and circle.

1

Aa



2

Bb



3

Cc



● Say, match, and trace.

1



2



3



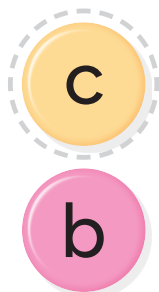
Cc

Bb

Aa

● Circle and write.

1



cat

2



ball

3



ant

4



car

5



bus

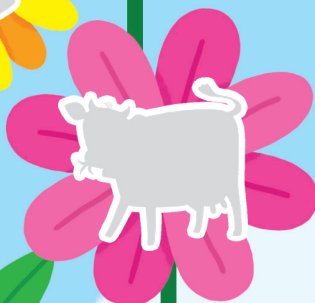
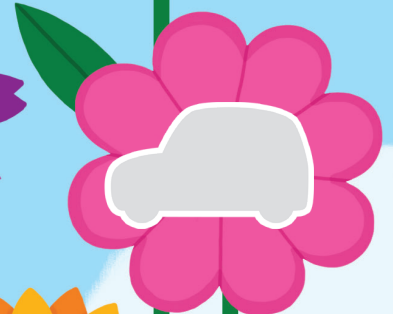
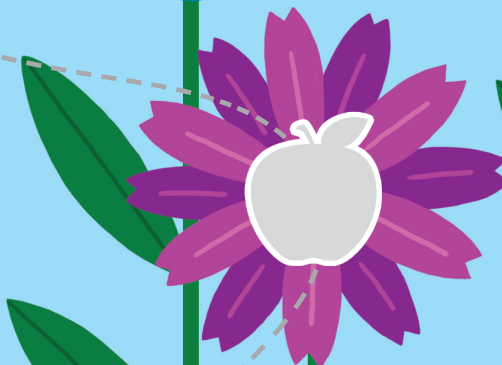
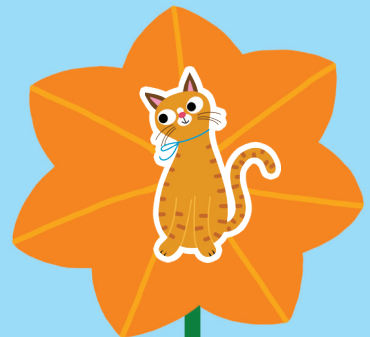
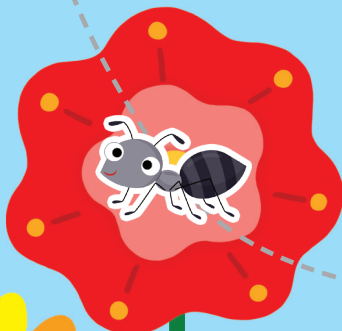
6



apple

Fuñ Activity

● Connect and stick. Then point and say.





STORY

Sight Words

the | is | in

Listen and read.

The **c**at is in the **c**ar.

The **a**nt is in the **c**ar.

The **a**lligator is on the **b**us.

The **b**ear is on the **b**us.

The **c**ow is on the **b**us.

Let's go on a picnic!

TR 09



True or False?

The **c**ow is in the **c**ar. T ☐ F ☒

The **b**ear is on the **b**us. T ☐ F ☐